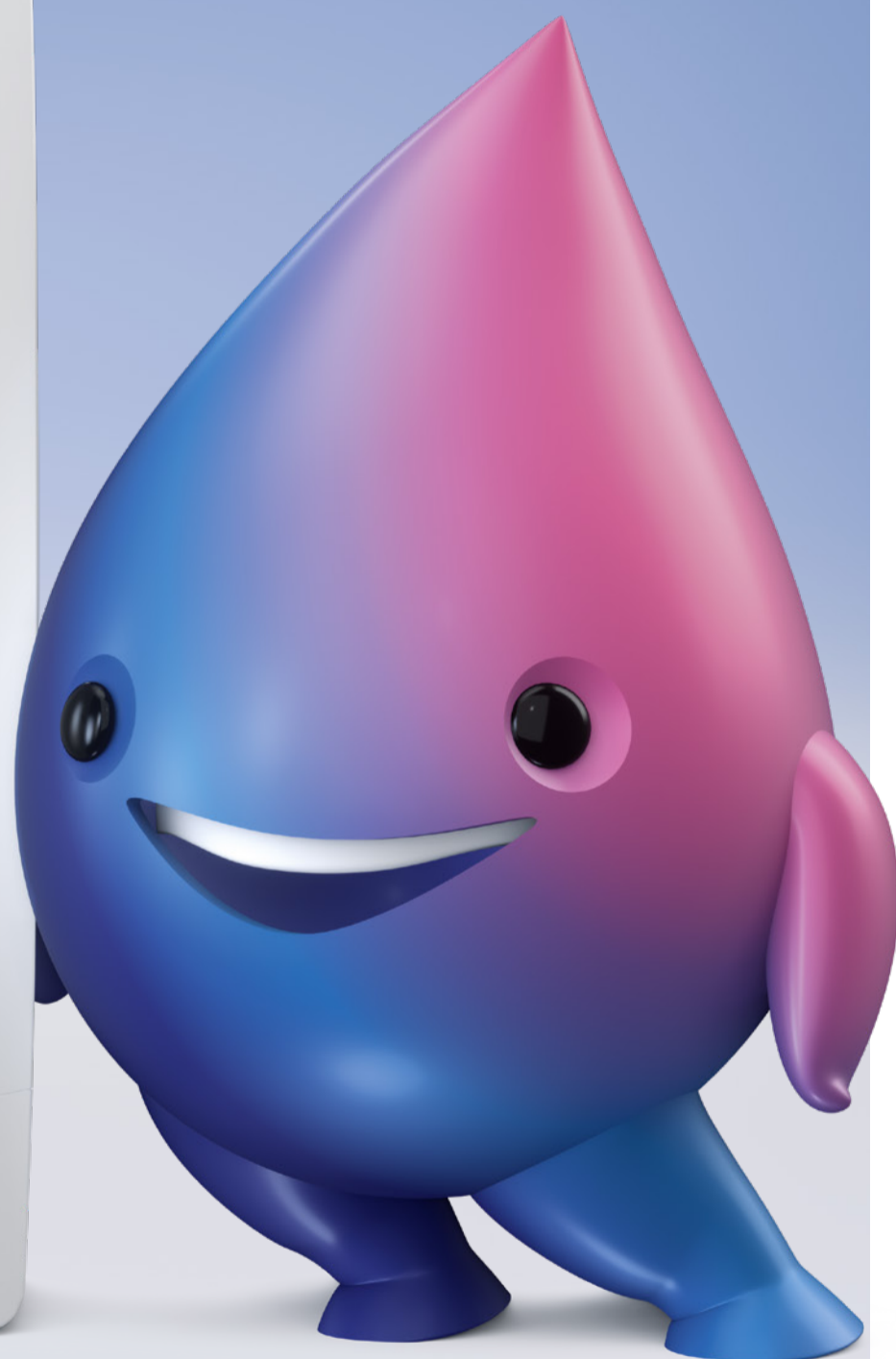


HOT NEWS



NEWS AND INFORMATION
FOR OUR PARTNERS



#waterlover

CLAGE is the innovative specialist for the development, production and distribution of products and systems for efficient, decentralised hot water supply and is one of the leading German manufacturers of instantaneous water heaters.

Turnaround, change and separations.

Everywhere there is discussion of an energy turnaround and, of course, rising costs. We are in the middle of a turning point and a social change that reaches into all areas of our lives. In order to implement this turnaround as quickly and cost-effectively as possible, the expansion of renewable energies and, of course, the use of energy-efficient technology is necessary. In many areas, industry has already developed appropriate technology that is ready to be used.

So it is no longer a future scenario, but present reality – finally! This is demonstrated, among other things, by the electricity-based house, because it requires no fossil fuels at all. The basis for this is green electricity, which is being massively expanded everywhere. In order to use this cleanly generated energy economically and efficiently, forward-looking technology must be used in all areas. With our energy-saving electric instantaneous water heaters, we are an important contributor in private and public buildings. And we have been doing so for over 70 years.

In this issue of Hotnews, we would like to introduce you to the advantages of decentralised hot water supply compared to centralised systems, why heating and hot water must finally be separated, and why we must finally “get away from gas”. Our little waterdrop, who can best explain the advantages of instantaneous water heaters from his point of view, helps us in a playful way. (page 4-7)

By the way:

CLAGE has once again convinced as an innovation leader and was therefore awarded the TOP 100 seal 2023. Only particularly innovative medium-sized companies receive this award. The competition is based on a scientific selection process. On behalf of compamedia, the organiser of the competition, innovation researcher Prof. Dr. Nikolaus Franke from the Vienna University

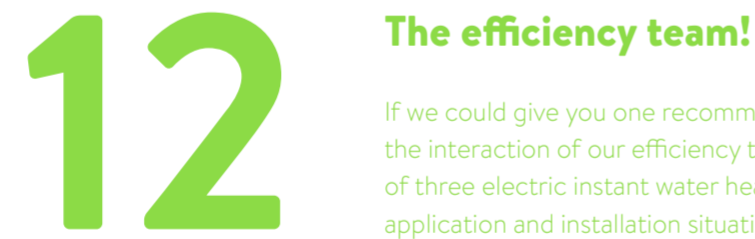


of Economics and Business Administration and his team examined CLAGE on the basis of more than 100 criteria from five categories: Innovation-promoting top management, innovation climate, innovative processes and organisation, external orientation/open innovation and innovation success. Of particular importance is whether a company's innovations are just a random product or are systematically planned and thus repeatable in the future.



The big separation story!

Changing something also means getting away from the old. To achieve the energy transition as quickly as possible, everyone can help. But to do so, you have to separate from things. From old technology, from fossil fuels such as gas and, of course, prejudices.



If we could give you one recommendation, it would be the interaction of our efficiency team, which consists of three electric instant water heaters for all areas of application and installation situations.



08

Experience hot water!

Our exhibition in the new sales and marketing centre is already doing a great job. Anyone who has spent time here experiencing hot water will become a supporter of electric instant water heaters. No wonder, because saving electricity, water and costs while offering maximum comfort – that is the future.



10

Our product world.

You will find most of our product range at a glance. Our hot water experts, an informative website and our catalogues are always available to provide you with more detailed information.



14

And it zipped again.

Not only instant water heaters, but also CLAGE water systems help to make the future better. Logistics of drinking water, the use of plastic and glass bottles and electrical kettles is eliminated. That's what we call environmentally friendly convenience. Read what's new from our water systems in this issue.

16

Best practice references.

The best way to convince yourself of our hot water concept is to see how it has been used successfully in a wide variety of areas. A few examples should help.



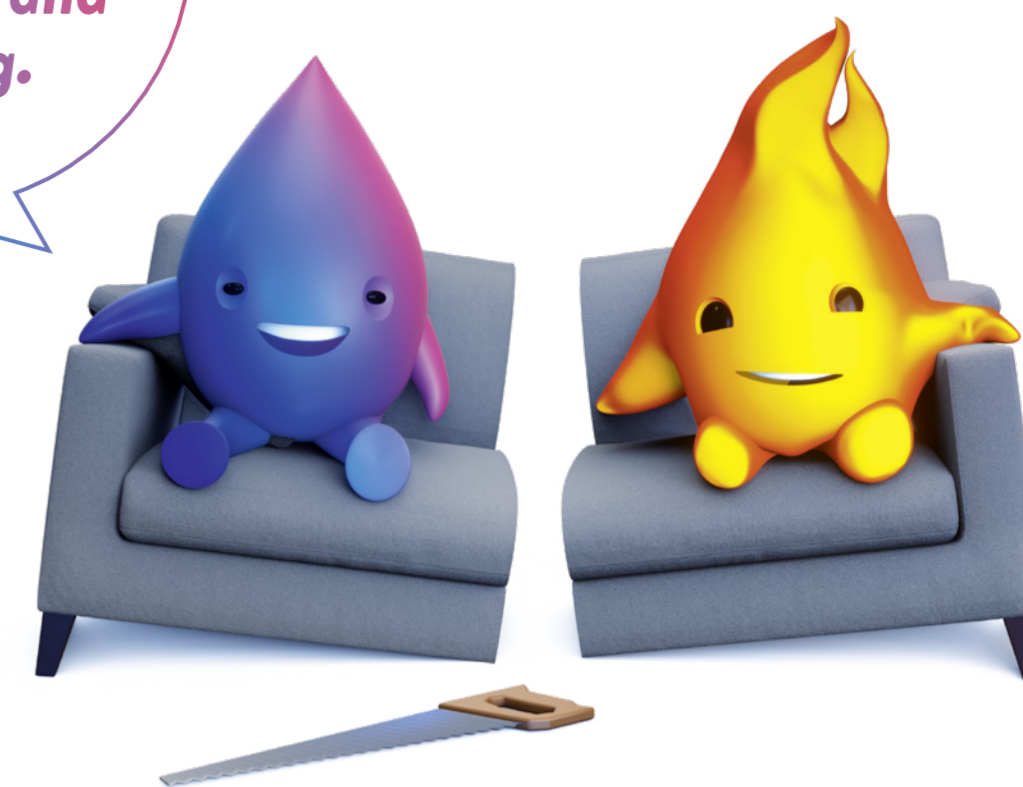
Finally separated.



Separately stronger, more environmentally friendly and more efficient – heating and hot water!

Room heating and hot water do not match! Waste of energy and the use of fossil fuels urgently need to be reduced. There is huge potential for savings within the hot water supply. In future, the heating system must be separated from the hot water supply in order to reduce the load on the heating system. A decentralised hot water supply with electric instant water heaters is the solution! What are you waiting for?

Separates hot water and heating.



Kick out gas!



Replace from old 5 l storage tanks!

The savings potential is huge. With electric instantaneous, water is not preheated and stored, but is only heated when it is used. If all 5-litre storage tanks in Germany were replaced, 390,000 tonnes of CO₂ would be saved*. How much is that? That is equivalent to about 195,000 cars driving for a year (2 tonnes of CO₂, mid-size car, 12,000 km).

Separate from fossil fuels! The share of renewable energies in the electricity mix is to be increased to 80 percent by 2030. Electricity is therefore becoming greener and greener, making us independent of fossil fuels in the long term. Electricity is therefore a good alternative for the transformation of the existing building technology. Whether with infrared heating or a heat pump – combined with decentrally installed electric instant water heaters, it's a perfect match, as the energy-efficient appliances reduce the temperature requirements for the heating system.



Facts
5 l storage tank

Savings
with E-mini instant water heaters

approx. 10 million small storage tanks are installed in Germany (expert estimate)

600,000 are sold annually (expert estimate)

0.25 kWh/day Savings of stand-by energy with an E-mini instant water heater compared to an older 5 l storage tank

912 GWh/year Savings if 10 million small storage tanks were replaced with E-mini instant water heaters

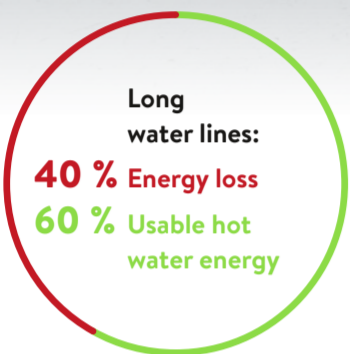
=

390,000 tonnes of CO₂

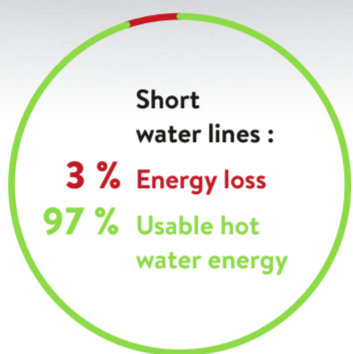
*Source: UBA 2022. Development of the specific greenhouse gas emissions of the German electricity mix in the years 1990 - 2021.



Central



Decentral



35°C Washing hands
38°C Showering

40°C Bathing



On demand and always at the desired temperature

The individual desired temperature can be set to the precise temperature. Directly on the appliance, by remote control or by app. This also prevents scalding, which ensures more safety. Electronically controlled instantaneous water heaters directly and without learning phase respond precisely to the user's needs (real-time power control based on temperature required and tapping quantity).

Zzz

Instantly at temperature

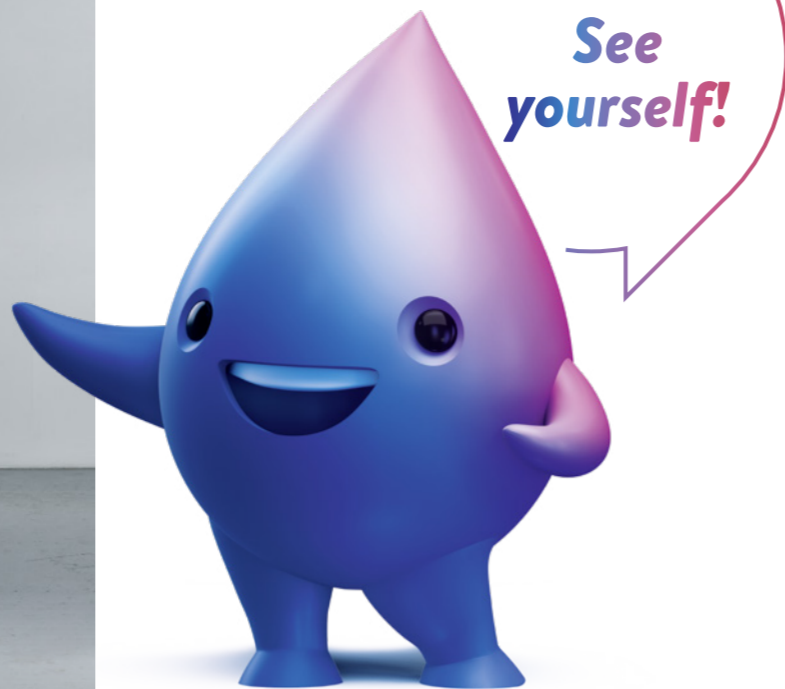
When the tap is opened, the water immediately flows at the desired temperature. The water is heated only as long and as much as is actually needed. Thanks to short water lines and modern technology.



Instantly hot!

Low energy losses and investment costs.

When heating and hot water are separated up to 40 % energy can be saved*. The heating can thus be designed precisely to the heating requirements of the building and switched off completely in summer. Investment and operating costs are reduced. Electric instantaneous water heaters provide only the amount of water and temperature that is actually needed directly at the tap, just-in-time.



See yourself!

No long distances!

Long water lines and circulation losses are eliminated because the units are installed directly at the tapping point. Investment costs are also saved: long hot water lines, circulation pumps and hot water storage tanks are not necessary. (See photo on the left)



Already here!

And those who separate, enjoy many advantages.



Save twice!

1. Saving energy!

Electric instant water heaters only heat the amount of water to the desired temperature that is currently required. It is not necessary to add cold water to reduce the temperature. The water is not preheated and stored in large amounts. Standby and distribution losses are eliminated. This saves energy. Thanks to energy monitoring, "Eco" real-time feedback and energy-saving function, energy-saving user behaviour will be encouraged.

2. Saving water!

Now that's cool! No water wastage. Hot water is available immediately with electric instant water heaters. You don't have to let water flow for a long time to get the desired temperature. With central systems, approx. 4.8 litres of water are wasted.

Water lover!

No wonder our electric instant water heaters are loved by water. They simply handle the valuable resource well. Economical, hygienic and in line with demand.



*Source: FFE Forschungsgesellschaft für Energiewirtschaft mbH 2011. Reduction of energy consumption and CO₂ emissions through decentralised electric hot water supply.

E-xperience hot water

Visit our new exhibition. Here you can experience hot water and see for yourself how the decentralised hot water supply with E-instant water heaters can be perfectly integrated into the building.



↑ EXPERIENCE UP CLOSE

Behind hot water comfort is intelligent technology. But in the end, it all comes down to personal preferences and the temperatures that are right for the targeted use. You can experience and feel this first hand in the exhibition.



↑ BACKGROUND KNOWLEDGE

The rotating walls of the cabinets allow visitors to look behind the scenes. Alternative products, installation diagrams or even the inside of the units become visible.

← TRY IT OUT

In the exhibition you can test different types of E-instant water heaters in typical installation situations. For this reason, different bathroom and shower situations are cleverly integrated into the exhibition space.

🗨️ Our experts will be happy to guide you through the exhibition.

🏠 Pirolweg 4
21335 Lüneburg

🕒 Mon – Thurs 9 – 17 h
Fri 9 – 15 h

📞 Registration:
04131 8901-821



MCX electronically
MBH hydraulically
M vented
M-O vented

MCX3: 3.5kW / 230V
 MCX4: 4.4kW / 230V
 MCX6: 5.7kW / 230V
 MCX7: 6.5kW / 400V

MBH3: 3.5kW / 230V
 MBH4: 4.4kW / 230V
 MBH6: 5.7kW / 230V
 MBH7: 6.5kW / 400V

M3: 3.5kW / 230V
 M4: 4.4kW / 230V
 M6: 5.7kW / 230V
 M7: 6.5kW / 400V

M3-O: 3.5kW / 230V
 M4-O: 4.4kW / 230V
 M6-O: 5.7kW / 230V
 M7-O: 6.5kW / 400V

MBX Lumino with sensor tap
MCX Blue with special tap
M/END with single-lever mixer

MBX3 Lumino: 3.5kW / 230V
 MBX7 Lumino: 6.5kW / 400V

MCX Blue: 3.5kW / 230V

M3/END: 3.5kW / 230V

M/SNM with two-handle mixer tap
M/SMB with wall mixer tap
MBX Shower with shower tap

M3/SNM: 3.5kW / 230V

M3/SMB: 3.5kW / 230V
 M7/SMB: 6.5kW / 400V

MBX4 Shower: 4.4kW / 230V
 MBX6 Shower: 5.7kW / 230V
 MBX7 Shower: 6.5kW / 400V

E-mini instant water heater for washbasins

The water is not preheated, but instantly heated at the washbasin. Quick and easy hand washing at the perfect temperature! The "MBX Lumino" set with touch-free tap also offers optimum hygiene and comfort.



Hand dryer

The hot-air hand dryer featuring an electronic infrared proximity switch turns on and off fully automatically without the need to touch it and is ideal for commercial bathrooms.

WHT: 1.0kW / 230V



Now even smarter!

DSX Touch **DFX Next** **DEX Next S** **DEX Next** **DEX Next L** **DCX Next** **DBX Next**

NEW NEW NEW NEW

18, 21, 24, 27kW / 400V

18, 21, 24, 27kW / 400V

18, 21, 24, 27kW / 400V

18, 21, 24, 27kW / 400V

18, 21, 24, 27kW / 400V

DCX Next: 18, 21, 24, 27kW / 400V
 DCX13 Next: 11 oder 13,5kW / 400V

DBX18 Next: 18kW / 400V
 DBX21 Next: 21kW / 400V
 DBX24 Next: 24kW / 400V
 DBX27 Next: 27kW / 400V

E-comfort instant water heater for shower and bathroom

The now even smarter "DSX Touch" impresses with energy monitoring, an optimized user interface and Bluetooth remote control! Thanks to intelligent energy monitoring, "Eco" real-time feedback and energy-saving function, energy-saving user behaviour will be encouraged.

Special solution for increased hot water comfort, optionally for on-wall or concealed mounting →



DSX Touch Twin
 2 x 18, 21, 24, 27kW / 400V

CFX-U **CEX-U** **CDX-U** **CEX** **CEX/CSO with tap**

11 / 13.5 kW / 400V

11 / 13.5 kW / 400V

CDX11-U: 11kW/400V
 CDX7-U: 6,9kW/400V

11 / 13.5 kW / 400V

11 / 13.5 kW / 400V

E-compact instant water heater for kitchens

The intelligent solution for an energy-efficient hot water supply at the kitchen sink. The compact appliance is in small space installed below the sink. Temperature control and energy monitoring is possible via remote control or app.

Smart Control

The intelligent hot water control with tablet or smartphone via "Smart Control" app.



App in the App Store for iOS devices from version 11



App at Google Play for Android devices from version 5.1

TEAMWORK

At the kitchen
E-compact instant water heater
CFX-U



At the washbasin
E-mini instant water heater
MCX



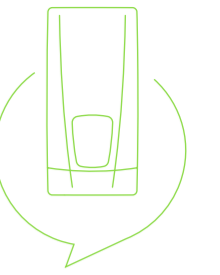
For shower and bathroom
E-comfort instant water heater
DSX Touch



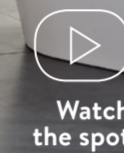
- Solar-ready, suitable for reheating
- Smart Control -ready
- Bluetooth remote control (included)
- Integrated Wi-F function
- Fosters energy-saving behavior



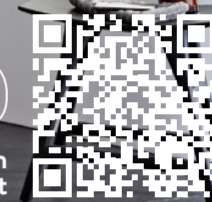
No lengthy mixing, shower right away.



E-comfort instant water heaters are suitable for any type of bathroom and heat the water energy-efficiently and comfortably. A wonderfully warm shower or a soothing bath are a real pleasure, especially when unlimited hot water is available exactly at the desired temperature. The "DSX Touch" as a fully electronically controlled instant water heater offers this comfort with low energy consumption. One "touch" is all it takes for the water to be at the right temperature – in seconds and without adding cold water.



Watch the spot

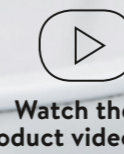
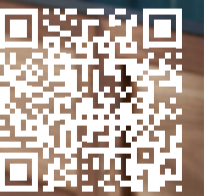


Don't wait any longer, wash up now.

Our E-compact instant water heaters make washing dishes, hands and cleaning fruit or vegetables comfortable by setting the optimum temperature. The "CFX-U" is the smart solution for energy-efficient hot water supply to the kitchen sink. The compact unit is installed under the sink to save space. This avoids distribution and heat losses. The remote control allows convenient temperature setting. The desired temperature can be preselected cost-efficiently and with degree precision.



Watch the spot



Watch the product video



Wash your hands and save energy.



E-mini instant water heaters are energy savers at the sink. The "MCX" E-mini instant water heater is the energy saver for the washbasin and the efficient alternative to the small storage. The water is not preheated, but just-in-time heated directly at the washbasin. Quick and easy hand washing at the perfect temperature. The "MCX" is also available in a set with a touch-free tap – for optimum hygiene and comfort.



NEW!

“Touch Free” tap



Touchless!

Modern design combines functionality with aesthetics. The “Touch-Free” tap offers touchless sensor operation, clearly understandable function displays and a high level of safety thanks to the safety sensor for boiling water.

NEW! G5 undersink unit. The next generation.

The new G5 undersink units are easy to operate thanks to the innovative touch display. Depending on the model, they supply boiling, chilled and sparkling water. The user can choose from a variety of suitable taps. Equipped with R290 coolant, they meet the latest environmental protection requirements.



NEW! Zip Tableau “Pro” for “Touch-Free”, “Classic Plus”, “Classic”

The optional stainless-steel drip tray with drain connection and extension piece enables the flexible installation of the “Touch-Free”, “Classic Plus” and “Classic” electronic tap anywhere next to the sink.



NEW!

“Classic Plus” tap

This electronic tap is provided with sensor buttons for water tapping. It delivers filtered, boiling and chilled water – sparkling or still – at the touch of a button.

The CLAGE HydroTap® water system is extremely practical in commercial, private and public areas. At the touch of a button, the water, boiling, still cooled or sparkling, is instantly available at the tap! By eliminating the need for electric kettles and bottled water as well as the associated logistics costs, every customer contributes to environmental protection.

Whatever the application or kitchen design, CLAGE provides the ideal solution in terms of technology and appearance. A wide range of fittings optimally adapts to your needs. In addition to the “Classic” tap, the “Arc” designer tap and an “All-In-One” tap that avoids a second tap for hot and cold water, the product range has been expanded to include the “Classic Plus” and the touchless tap “Touch-Free”. All fittings (except the Touch-Free) are available in three different finishes. This means that there are no limits to the individuality of design-oriented customers.

It made Zip again.



“Classic” tap

“All-In-One” AIO tap

“Arc” tap

Our experts will be happy to advise you on your individual CLAGE water system.



HUMBOLDTFORUM

BERLIN



INSTALLED APPLIANCES

- 65 × E-mini instant water heaters MCX7
- 31 × E-compact instant water heaters CEX-U
- 9 × E-comfort instant water heaters DEX / DCX Next

Exhibition and event building

With the "Humboldt Forum", Berlin will have a new landmark in 2021. The baroque front of the old Berlin Palace, reconstructed according to original plans, meets contemporary architecture. Visitors can experience world-famous collections in an exhibition and event area of more than 40,000 square metres. The interplay of events, exhibitions and cultural education makes polyphony the programme of this universal museum. In redesigning the entire building, attention was given to energy efficiency and modern technical equipment. Hot water in the bathrooms and sanitary rooms is provided by energy-saving electric instant water heaters from CLAGE.

Building owner:

Stiftung Humboldt Forum im Berliner Schloss
BBR - Bundesamt für Bauwesen und Raumordnung



The residential buildings in the Blumenviertel, built in 1928, are protected historical monuments and were extensively renovated. In addition to the facade renovation, the existing central hot water supply was converted to a decentralised system with electric instantaneous water heaters and the room heating was separated from the hot water system.

The 238 flats were equipped with electric instantaneous water heaters. The aim of the measure was to permanently ensure the quality of the drinking water and to improve the comfort for the tenants. With the electric instant water heaters from CLAGE, this goal was fully achieved.

Building owner:

bbg Berliner Baugenossenschaft
Pacelliallee 3, 14195 Berlin

INSTALLED APPLIANCES

- 238 × E-comfort instant water heaters DSX Touch
- 7 × E-comfort instant water heaters DCX13
- 46 × E-compact instant water heaters CFX-U
- 7 × E-mini instant water heaters MCX7

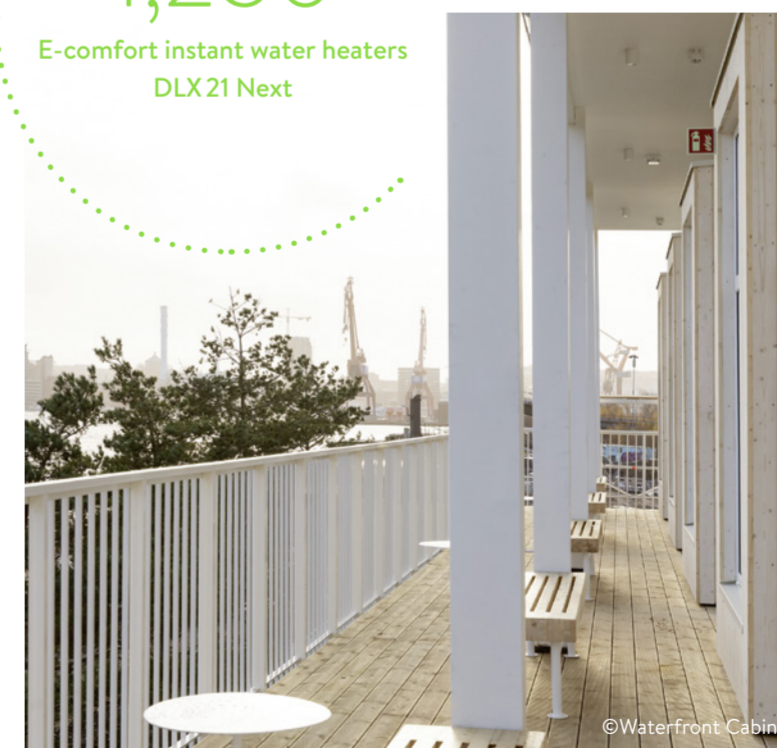
RESIDENTIAL BUILDING

BERLIN



1,250

E-comfort instant water heaters
DLX 21 Next



HOLIDAY STUDIOS

GOTHENBURG

In the centre of Gothenburg (Sweden), the holiday studios "Waterfront Cabins" have been built directly at the canal in a modern and stylish design, with an outdoor pool, café and sauna.

The focus of this holiday complex is on sustainability. Here, the innovative electric instant water heater has prevailed over conventional hot water tanks. In contrast to the storage tank, the DLX 21 Next not only offers energy savings of up to 40 %, but also comfort and saves space. In the bathrooms of the flats, a total of 1,250 DLX 21 Next electric comfort instant water heaters were installed in the wall cabinets and provide instant hot water at the hand basin, in the kitchen and in the bathroom at all times.

Building owner:

Waterfront Cabins
Kvillepiren, 417 55 Gothenburg



HF-GROUP HAMBURG

The HF-Group's new headquarters in Hamburg meets the highest demands on contemporary working. The new premises are geared towards digital work processes and communication and offer different workplaces for employees in an open office. When equipping the kitchens, meeting rooms and sanitary facilities, attention was paid to energy efficiency, comfort, hygiene and environmentally conscious technology. The water systems and instant water heaters from CLAGE make an important contribution to the modern building concept.

INSTALLED APPLIANCES

- 22 × E-mini instant water heaters MBX 3 Lumino
- 4 × E-mini instant water heaters MCX 3 / MCX 7
- 6 × Sensor taps AEB
- 4 × E-comfort instant water heaters DBX 11
- 12 × Water systems Zip G4 BCS 100/75

AIRPORT ZURICH

"THE CIRCLE" is the new quarter at Zurich Airport. Together with the adjacent park, the quarter is directly connected to the airport terminals and thus combines work, shopping and relaxation, medical services, congresses and events. For culinary enjoyment, the quarter offers numerous restaurants and bars, and two Hyatt hotels complete the range of accommodation options. Further services such as coworking spaces, a fitness centre or a daycare centre will be available from 2021.

Architect Riken Yamamoto has not only designed "THE CIRCLE" as a the connecting element of airport and park, but at the same time achieved a sustainable development that was awarded LEED® PLATINUM.

INSTALLED APPLIANCES

- 292 × E-mini instant water heaters MCX 4
- 2 × E-mini instant water heaters MCX 6
- 6 × E-mini instant water heaters MCX 7
- 2 × E-compact instant water heaters CFX-U
- 12 × E-comfort instant water heaters DCX13 Next



50 Hertz
IN BERLIN



Puma
IN HERZOGENAURACH



Elbphilharmonie
IN HAMBURG



Schloss Elmau Retreat
IN OBERBAYERN



Die Welle
IN FRANKFURT



Loftdepot
IN BERLIN



Universal Music
IN BERLIN



Leuphana University
Central Building
IN LÜNEBURG



Tanzende Türme
IN HAMBURG



EgeTrans
IN MARBACH AM NECKAR

Made in Germany 

*Kick
out gas!*



Our contribution to a sustainable energy transition:

Decentralised hot water supply with electric instantaneous water heaters is an important element in building technology to become independent of fossil fuels. Read all about it in this Hotnews on pages 4-7.

CLAGE GmbH | Pirolweg 4 | 21337 Lüneburg | www.clage.com

 **CLAGE**

9100-91381 · 02.23 · KR 1

